

Showcase Awards Gala

Friday, April 26, 2024



Consulting Engineers of Alberta Acknowledges and Thanks the
Showcase Awards Gala Sponsors 2024

Presenting Sponsor



Scheffer Andrew Ltd.
Planners & Engineers

Fostering Sponsors

AECOM



McElhanney



Stantec



THURBER ENGINEERING LTD.



Table of Contents

04	Gala Dinner Menu
05	Gala Evening Program
06	The Lieutenant Governor's Award for Distinguished Achievement Recipient
08	Harold L. Morrison Rising Young Professional Award
09	Notice to All Submitting Firms & Showcase Awards Judges
10	Showcase Awards Submissions by Category
02 39	Showcase Awards Gala Sponsors 2024

Menu

First Course

Olive oil poached albacore tuna and prawn, smoked steelhead roe, sous vide cucumber and watermelon, pink radish, olive oil custard, white balsamic vinaigrette, and botanical pantry greens (GF)

Entrée

Overnight Roasted Shaved Alberta Prime Rib with smoked butter potato mousseline, horseradish crumble, and Chef inspired locally sourced in-season vegetables finished with sweet garlic jus (GF)

Vegetarian Entrée

Cast Iron Press Meadow Mushroom Steak
Cream tofu, wild arugula, peperonata, polenta pomme puree, sauce vert, ECC micro herbs (V, GF)

Dessert

Blueberry mousse with lemon curd, white chocolate feuilletine crunch, vanilla ice cream served with raspberry sauce. *(Contains Fish Gelatin)*

(V) Vegan

(GF) Gluten Free



Chef Serge

Edmonton Convention Centre

Recognized as one of Canada's top three chefs and named Canadian Chef of the Year in 2012, Executive Chef Serge Belair leads one of Canada's premier culinary teams. Hailing from Gatineau, Quebec, Chef Belair's French roots inspires his culinary style that has been widely recognized by national and international culinary experts.

Program

6:30 pm

Welcome by **Chris Workman**, CEA Vice President

Master of Ceremonies – **Ryan Jespersen**

Address by **Jason Maurer**, CEA President

Greetings from:

- Province of Alberta - **Honourable Dale Nally**, Minister of Service Alberta and Red Tape Reduction
- City of Edmonton - **Mayor Amarjeet Sohi**
- Association of Consulting Engineering Companies|Canada - **Allyson Desgroseilliers**, Chair

Dinner

Award Presentations:

- The Lieutenant Governor's Award for Distinguished Achievement
Presented by: **Her Honour, the Honourable Salma Lakhani, AOE, B.Sc., LLD (hon)**
- Harold L. Morrison Rising Young Professional Award
- Showcase Awards

Lieutenant Governor's Award for Distinguished Service

Practically Civil

WHEN IT COMES TO building and tinkering, Herb Kuehne started early — you could even argue a bit too early. “When I was 12 years old, we were in the garage, using acetylene, brazing things — we got quite the technical background when we were still pretty young,” Kuehne recalls.

“We” were Kuehne and his brother, under the tutelage of their father, an “exceptional welder who founded a few companies and always came up with innovative ideas and ways to do things.” But the Kuehne kids showed such engineering aptitude that the garage quickly went from a place where father taught sons to a typical shop where a trio of (relative) equals worked on projects as they pleased, so much so that when the brothers Kuehne eventually built their own go-kart, “Dad wasn’t there.”

Dad was there for future chess games, though, and both Kuehne’s parents fostered his curious, technical mind with gifts like a telescope and chemistry set. By the time he approached college age, Kuehne started thinking of engineering as a career. That’s when the family’s resident nuclear engineer stepped in.

“My uncle actually taught nuclear engineering down in the States. And to help me make the decision, I flew down to Kentucky where he set up interviews with a bunch of other profs, in each one of the disciplines, whether it was electrical, mechanical or structural engineering.”

So which discipline did he choose to study at the University of Alberta? “Civil,” he laughs, clarifying that at the time, it just seemed like a good fit. But looking back, he says he enjoyed the practicality of civil engineering, and how it affects so many people’s daily lives.

“I started with Texaco Canada, as a refinery engineer, and it was great. But I wanted to do something different where I did more to improve people’s quality of life, whether it was building roads or improving water quality or sanitation.

So I ended up going to Associated Engineering after about a year at Texaco.” Of the many life-improving projects Kuehne’s helped construct, he cites the Cold Lake Marina — which was the largest inland marina in Western Canada at the time — and Edmonton’s Fulton Creek Marshland — the city’s first wetland facility — as particularly impactful. “Today, you see them everywhere, as part of every subdivision, but at the time, people built normal stormwater management ponds,” he says. “That was a pretty neat project, coming up with a concept of getting nature to clean the stormwater that way. Now, it’s taken for granted, but it was unique at the time.”

As an avid hunter and fisher growing up, Kuehne brought an outdoorsman’s appreciation of nature to his projects. “I love the outdoors, and I was a boater, so for the Cold Lake marina, I wasn’t coming in cold — I knew what was needed for a boating community, like that you don’t just size a marina for the craft that are there at the time, you build for the future. A lot of engineering is common sense.”

Kuehne used his common sense on another fondly recalled project, one that required less engineering, and more of his interpersonal skills. “I like just being able to help clients, and one that made a big difference was helping the city of Fort McMurray overcome some of the huge growth issues they had, by helping them secure some of the infrastructure funding that they needed from the province to help the community grow.”

As he thinks of how his engineering community grew over the years, Kuehne recalls a behind-the-scenes decision he pushed for as president of Consulting Engineers of Alberta (CEA), back when the industry struggled to hire young engineers. "It was a function of salary," he explains. "So I was able to get the CEA board to agree that we had to significantly raise the salary of graduate engineers so that we could bring them into our firms. As a result, we were able to attract some of the best and the brightest in our industry, and it had a cascading effect with salaries going up all over the place. It's important to remember that we're competitors, but we're also members, so we're all in this together."

Kuehne represented CEA on the board of ACEC, where he also served as Chair, and remembers his contribution as changing the Board governance and having a forward-looking focus on consulting engineering issues.

Looking back on his Lieutenant Governor's Award-winning career, which included CEA Merit and Excellence awards, myriad projects, as well as international work in China, Kuehne says that even though members may compete for projects, "a competitor today could be a friend tomorrow," and while he may have held a leadership position for much of it, he's been most happy to be part of a team.

"I think a good engineer has to look at the big picture, and be holistic in their approach. I used to always say to people, 'It's up to you guys, I'm just the coach in the background helping guide you — you're the ones that will achieve the success, and you're the ones that will be recognized for it.'"



Herb Kuehne, MBA, P.Eng.

Harold L. Morrison Rising Young Professional Award



Caitlyn Osz-Theriacult, P.Eng., CSM
Low Carbon Solutions Specialist
Stantec Consulting Ltd.



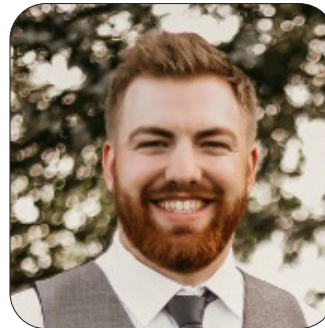
Frank Hui, P.Eng.
Project Manager/ Bridge Inspector
AECOM



Johanna Kolleywyn, P.Eng.
Deputy Integration Manager
Hatch



Ryan Hall, P.Eng.
Bridge and Structural Lead
McElhanney Ltd.



Scott Riege, P.Eng.
Civil Engineer
Klohn Crippen Berger Ltd.



Victoria Buffam, M.Sc., P.Eng.
Structural Engineer
DIALOG

Thank You to Our Judges

Art Washuta, P.Eng.
Don Chambers, P.Eng.
Ken Pilip, P.Eng.
CEA Past Presidents

Notice to All Submitting Firms

Announcement of Showcase Award Winners

The Showcase Awards is an 'Oscar Style' awards show. In each category nominees will be announced and the winner(s) declared: Merit and Excellence. If your project is announced as a winner please make your way to the stage. NOTE the entire team, consultants, clients, subs, contractors, are encouraged to come up to the stage together to be recognized.

Showcase Award Winners' Gala Photo

Each award winning team will be directed from the stage to the photography area for their official award photo. After the photo, please make your way back to your seats as quickly as possible, especially if your project is in multiple categories.

Showcase Awards - Annual Print

Each award winning project receives an official 2024 Showcase Award print for the winning firm(s) and client(s).

Each winning firm is asked to come to the Award Print Desk at the end of the evening and sign for the award prints. The Award Print Desk is located in the meeting room next to the coat check in the foyer. Please note it is the winning firm's responsibility to ensure the client receives the print.

To order additional award prints, please contact Inderjeet Singh at isingh@cea.ca, or go to the CEA Showcase Awards Gala web page to download the order form: www.cea.ca

Judges

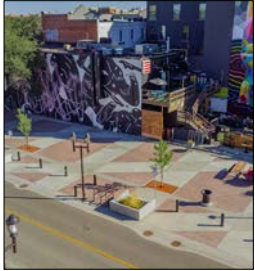
Adam Laughlin, P.Eng.; **Andre Corbould**, P.Eng.; **Andrew Sharman**, M.Sc., CMILT
Bill Hinsley, AECPM; **Bill Rosehart**, P.Eng., PhD.; **Bruce Cullen**, B.Sc.; **Cathy Maniego**, P.Eng.
Craig Walbaum, M.Sc., P.Eng.; **Garry Johnston**, P.Eng.; **Kyle van Steenoven**, P.Eng.
Lianne Lefsrud, P.Eng., PhD.; **Lisa Doig**, P.Eng., FEC, MBA; **Lisa White**, PhD., P.Eng., FEC
Michael Thompson, P.Eng., MBA; **Mike Koziol**, P.Eng., M.Eng.; **Paul Breeze**, F.A.C.I., F.C.P.C.I.
Paul Wynnyk, MBA, B.Eng., P.Eng., F.C.A.E.; **Ranjit Tharmalingam**, P.Eng.; **Tom Loo**, P.Eng.

Category Order:

- Community Development
- Environmental
- Transportation Infrastructure
 - Transportation Structures
- Building Engineering
 - Institutional
- Natural Resource Production
- Community Outreach and In-House Initiatives
- Project Management
- Building Engineering
 - Commercial
- Studies, Software and Special Services
- Transportation Infrastructure
 - Roads, Interchanges, Airports, Mass Transit
- Small Firm - Big Impact
- Sustainable Design
- Water Resources

Showcase Awards Submissions by Category - Project Summary

Community Development



Enhancing Edmonton Communities Through Neighbourhood Renewal

Firm: **Al-Terra Engineering Ltd.**
Client: City of Edmonton
Location: Edmonton, Alberta
Sub Consultants: Thurber Engineering Ltd.; LEX3 Engineering Inc.; D.E.S. Engineering Limited; EDA Planning + Urban Design; Nektar3D Inc.; Twenty/20 Communications
Contractors: O' Hanlon Paving Ltd.; North West Paving Ltd.; Standard General Inc.; Lafarge



Comprehensive Community Utility Master Planning

Firm: **WSP**
Client: City of Beaumont
Location: Beaumont, Alberta



Downtown Flood Barrier and Public Realm Improvements, Eau Claire Plaza to Riverwalk

Firm: **Klohn Crippen Berger Ltd.**
Client: City of Calgary
Location: Calgary, Alberta
Sub Consultants: O2 Planning + Design; Bison Historical Services Ltd.; SMP Engineering; ION Irrigation Management Inc.; ISL Engineering and Land Services Ltd.
Contractors: Graham Infrastructure LP; Wilco Contractors Southwest Inc.; Double Star Drilling; R.W Gallant Equipment Ltd.; Dobbin Electrical Services; Landform Inc.; Greenscape Irrigation



Community Development



Edmonton Community Health Hub North

Firm: **Englobe Corp.**
Client: Jadecor Developments Ltd.
Location: Edmonton, Alberta
Sub Consultants: Territorial Electric; Modern Niagara
Other Key Player: START Architecture Inc.



Glenora School: Transportation Upgrades and Renewal

Firm: **Al-Terra Engineering Ltd.**
Client: Edmonton Public Schools
Location: Edmonton, Alberta
Sub Consultants: D.E.S. Engineering Limited; EDA Planning + Urban Design Inc.; John Wood Group PLC.
Contractor: Prologic Construction Ltd.
Other Key Players: City of Edmonton; Glenora School

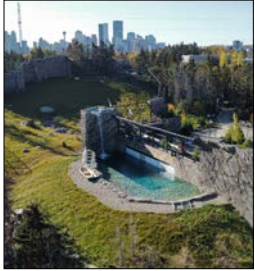


Red Deer Recovery Community

Firm: **MPE, a division of Englobe**
Client: Alberta Infrastructure
Location: Red Deer, Alberta
Sub Consultants: FWBA Architects; Tech-Cost Consultants Ltd. & Professional Quantity Surveyors;
Brad Salter Designs Ltd.
Contractor: Synergy Projects Ltd.



Community Development



Redevelopment of the Canadian Wilds at the Calgary Zoo

Firm: **ISL Engineering and Land Services Ltd.**
Client: Calgary Zoological Society
Location: Calgary, Alberta
Other Key Players: Group2 Architecture Interior Design Ltd.; Jones & Jones Scatliff + Miller + Murray; SMP Engineering; Remedy Engineering; Chandos Construction; Professional Excavators & Construction Ltd.; RimRock Landscaping Ltd.; Custom Electric Ltd.; Botting & Associates Alberta Ltd.



Environmental



Centre Street Gravel Bar Reshaping and Fish Habitat Restoration Project

Firm: **WSP**
Client: City of Calgary
Location: Calgary, Alberta
Sub Consultants: Tannas Conservation Services Ltd.; Dr. Greg Courtice
Contractors: Priestly Demolition Inc.; Dakota Reclamators Ltd.



Claystone Landfill Gas Quantification Program

Firm: **GHD Limited**
Client: Claystone Waste Ltd.
Location: Ryley, Alberta





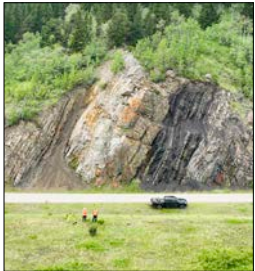
170 Street Pedestrian Bridge

Firm: **Associated Engineering**
Client: City of Edmonton
Location: Edmonton, Alberta
Sub Consultants: Thurber Engineering Ltd.; McElhanney Ltd.
Contractors: Dennis Drew; EllisDon Construction
Other Key Players: West Edmonton Mall; Covenant Health (Misericordia Hospital)



Athabasca River Bridge on Hwy 813: Bridge Replacement on Active Landslide

Firm: **COWI North America Ltd.**
Client: Alberta Transportation and Economic Corridors
Location: Athabasca, Alberta
Sub Consultant: Tetra Tech Canada Inc.



Geohazard Change Detection Research Project

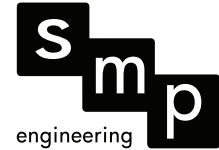
Firm: **Klohn Crippen Berger Ltd.**
Client: Alberta Transportation and Economic Corridors
Location: Alberta





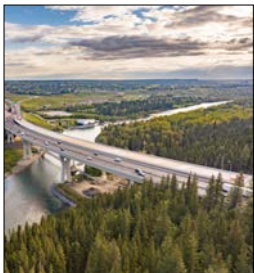
Reconciliation Bridge, Lighting Redesign

Firm: **SMP Engineering**
Client: Calgary Municipal Land Corporation
Location: Calgary, Alberta
Contractor: Allied Projects
Other Key Players: lightSPACE at SMP Engineering; WOW Lighting & Controls; City of Calgary Indigenous Relations Office (IRO)



Smith Crossing Pedestrian Bridge Replacement

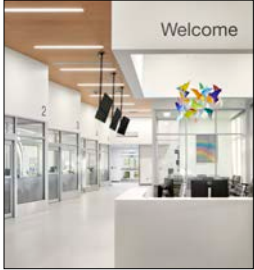
Firm: **Morrison Hershfield Limited**
Client: City of Edmonton
Location: Edmonton, Alberta
Sub Consultants: Thurber Engineering Ltd.; Associated Engineering; Kinnikinnick Studio; EDA Planning & Urban Design; International Quality Consultants; Spencer Environmental Consultants
Contractors: Alberco Construction Ltd.; Rozen Steelworks Inc.
Other Key Players: Andrew Neilson, P.Eng.; Hamid Omran, P.Eng.; Cooper Warrington, EIT



Twinning of Stoney Trail over the Bow River in NW Calgary

Firm: **Stantec Consulting Ltd.**
Client: Alberta Transportation and Economic Corridors
Location: Calgary, Alberta
Sub Consultant: Thurber Engineering Ltd.
Contractor: Flatiron-Aecon Joint Venture





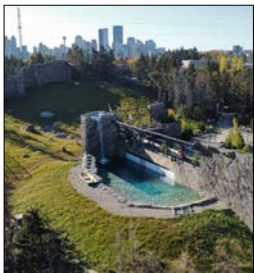
Misericordia Community Hospital New Emergency Department and Generator Building

Firm: **MCW Hemisphere Ltd.**
Client: Alberta Infrastructure
Location: Edmonton, Alberta
Sub Consultants: RPK Architects Ltd.; PCL Construction; Fast + Epp



Red Deer Recovery Community

Firm: **MPE, a division of Englobe**
Client: Alberta Infrastructure
Location: Red Deer, Alberta
Sub Consultants: FWBA Architects; Tech-Cost Consultants Ltd. & Professional Quantity Surveyors; Brad Salter Designs Ltd.
Contractor: Synergy Projects Ltd.



Redevelopment of the Canadian Wilds at the Calgary Zoo

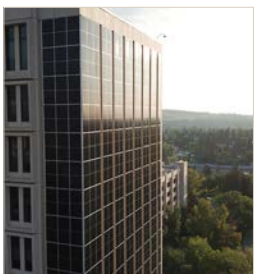
Firm: **ISL Engineering and Land Services Ltd.**
Client: Calgary Zoological Society
Location: Calgary, Alberta
Other Key Players: Group2 Architecture Interior Design Ltd.; Jones & Jones Scatliff + Miller + Murray; SMP Engineering; Remedy Engineering; Chandos Construction; Professional Excavators & Construction Ltd.; RimRock Landscaping Ltd.; Custom Electric Ltd.; Botting & Associates Alberta Ltd.





University of Calgary Haskayne School of Business Mathison Hall Expansion

- Firm: **Smith + Andersen**
- Client: University of Calgary
- Location: Calgary, Alberta
- Sub Consultants: Duke Evans Inc.; Entuitive Corporation; SMP Engineering; O2 Planning + Design Inc.; Footprint; EllisDon Construction Services Inc.; Botting & Associates; ISL Engineering and Land Services Ltd.
- Other Key Players: Diamond Schmitt Architects; GGA-Architecture



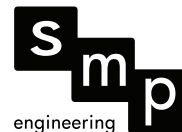
University of Calgary Social Sciences Re-clad and Solar Wall

- Firm: **Entuitive Corporation**
- Client: University of Calgary
- Location: Calgary, Alberta
- Sub Consultants: GGA-Architecture; SMP Engineering; EllisDon; Remedy Engineering; Building Envelope Engineering Inc.



Windermere Fire Station 31

- Firm: **SMP Engineering**
- Client: City of Edmonton
- Location: Edmonton, Alberta
- Sub Consultants: Smith + Andersen; RJC Engineers
- Contractor: PCL Construction
- Other Key Players: S2 Architecture; gh3*; Urban Systems Ltd.; Complete Power Solutions



Natural Resource Production



Travers Solar

Firm: **Stantec Consulting Ltd.**
Client: PCL Construction; Axiom Infrastructure
Location: Vulcan County, Alberta
Sub Consultants: CIMA Canada Inc. (CIMA+); Tulloch Engineering
Contractor: PCL Construction

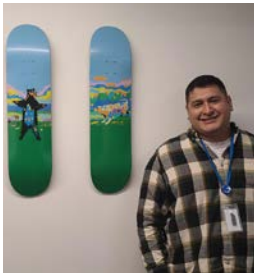


Community Outreach and In-House Initiatives



GHD in the Community: Ocean Wise Shoreline Cleanup

Firm: **GHD Limited**
Client: GHD Limited
Location: Alberta



Inclusion & Diversity: A Culture of Belonging Where Everyone Can Thrive

Firm: **GHD Limited**
Client: GHD Limited
Location: Alberta

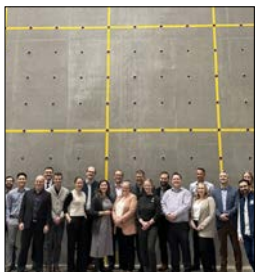
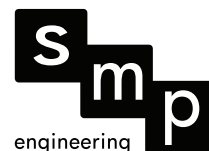


Community Outreach and In-House Initiatives



SMP Charity Mini-Putt Tournament

Firm: **SMP Engineering**
Client: SMP Engineering
Location: Calgary, Alberta



Threads of Excellence: DIALOG and the University of Alberta's Legacy in Structural Engineering Collaboration

Firm: **DIALOG**
Client: DIALOG
Location: Edmonton, Alberta



Project Management



Bonnybrook Wastewater Treatment Plant: Plant D Expansion

Firm: **Stantec Consulting Ltd.**
Client: City of Calgary
Location: Calgary, Alberta
Sub Consultants: Jacobs; AECOM
Contractor: Graham Construction & Engineering



Project Management



Northwest Inner City Community Drainage Improvements – Parallel Delivery of Design & Construction

Firm: **Joint: GHD Limited & Associated Engineering & MPE, a division of Englobe**
Client: City of Calgary
Location: Calgary, Alberta



Centre Street Gravel Bar Reshaping and Fish Habitat Restoration Project

Firm: **WSP**
Client: City of Calgary
Location: Calgary, Alberta
Sub Consultants: Tannas Conservation Services Ltd.; Dr. Greg Courtice
Contractors: Priestly Demolition Inc.; Dakota Reclamators Ltd.



Confederation Way Sanitary Sewer Bypass

Firm: **Associated Engineering**
Client: Regional Municipality of Wood Buffalo
Location: Fort McMurray, Alberta
Sub Consultant: Thurber Engineering Ltd.
Contractors: OCL Group; BIRD Construction; Sureway Construction Group





Fish Creek West Sanitary Trunk

Firm: **MPE, a division of Englobe**

Client: City of Calgary

Location: Calgary, Alberta

Sub Consultants: Applied Aquatic Research Ltd.; AB Erosion & Sediment Control; Almor Testing Services Ltd.; Anena Air Quality Testing; Bifrost Environmental and Remediation Services Inc.; BlueFox Engineering; Englobe Corp.; Hatch; Ian Moxon Architect Inc; Kerr Wood Leidal; Lombard North; Matrix Solutions; NorthStar Contracting Inc; Odds at Home Inspection; Watt Consulting Group

Contractor: Whissell Contracting Ltd.



Making a Way: Edmonton's Valley Line West LRT Drainage Relocation Project

Firm: **SMA Consulting Ltd.**

Client: EPCOR

Location: Edmonton, Alberta

Contractor: Shanghai Construction Group

Other Key Players: Associated Engineering; PME Inc.



Malcolm Tweddle & Edith Rogers Dry Ponds and Sewer Improvements

Firm: **AECOM**

Client: EPCOR

Location: Edmonton, Alberta

Contractors: Sureway Construction; GS Construction; M.A.P. Water and Sewer Services; Bothar





QEII Highway and 40 Avenue Interchange

Firm: **Joint: Associated Engineering & ISL Engineering and Land Services Ltd.**
Client: City of Airdrie
Location: Airdrie, Alberta
Sub Consultants: Tetra Tech Canada Inc.; TDM Engineering Ltd.; International Quality Consultants Ltd.;
Bison Historical Services Ltd.; Bunt & Associates Engineering Ltd.
Contractor: EllisDon Construction Services Inc.



Royal Glenora Club Redevelopment

Firm: **WSP**
Client: Royal Glenora Club
Location: Edmonton, Alberta
Other Key Players: Carlson Construction Ltd.; Arc Studio; ECCOM Consulting Ltd.; Entuitive Corporation;
Smith + Andersen; Al-Terra Engineering Ltd.; ISL Engineering and Land Services Ltd.



Smith Crossing Pedestrian Bridge Replacement

Firm: **Morrison Hershfield Limited**
Client: City of Edmonton
Location: Edmonton, Alberta
Sub Consultants: Thurber Engineering Ltd.; Associated Engineering; Kinnikinnick Studio;
EDA Planning & Urban Design; International Quality Consultants;
Spencer Environmental Consultants
Contractors: Alberco Construction Ltd.; Rozen Steelworks Inc.
Other Key Players: Andrew Neilson, P.Eng.; Hamid Omran, P.Eng.; Cooper Warrington, EIT



Building Engineering - Commercial



Glenora Park Assisted Living and Respite Care Facility

Firm: **Englobe Corp.**
Client: ONE Properties; REVOne Westmount LP
Location: Edmonton, Alberta
Contractors: Clark Builders; MCL Power Inc.; Jetco Mechanical Ltd.
Other Key Player: DIALOG

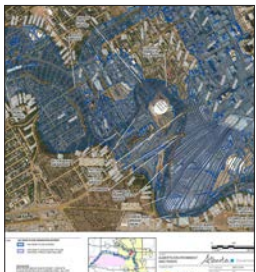


Ricochet Oil Corp Aquatic Centre

Firm: **WSP**
Client: Town of Drayton Valley
Location: Drayton Valley, Alberta
Sub Consultants: Group2 Architecture Interior Design Ltd.; RJC Engineers; Arrow, a division of Englobe; Stantec Consulting Ltd.
Contractors: Chandos Construction; AltaPro Electric Ltd.; Priority Mechanical; Master Pools Alta Ltd.; XMG Commercial Floor Coverings; Spartan Steel Ltd.
Other Key Player: Brazeau County



Studies, Software and Special Services



Bow and Elbow River Hazard Study

Firm: **WSP**
Client: Alberta Environment and Protected Areas
Location: Calgary, Alberta





Closing the Infrastructure Gap for First Nations

Firm: **Associated Engineering**
Client: Assembly of First Nations
Location: National Project
Other Key Players: Indigenous Services Canada; First Nations Engineering Services; BTY Group; Planetworks Consulting Corporation; Yalleedesigns; Over 400 First Nations



Development of Hydrological Models for Alberta River Flood Forecasting

Firm: **Northwest Hydraulic Consultants Ltd.**
Client: Alberta Environment and Protected Areas
Location: Alberta



Dickson Dam Discharge Capacity Enhancement - Service Spillway Upgrades

Firm: **WSP**
Client: Alberta Transportation and Economic Corridors
Location: Red Deer, Alberta
Contractor: PCL Construction
Other Key Players: Kenneth Kress; Lloyd Madge; Kyle Bergen





Digital Leap: Transforming Asset Management from Paper to Digital 3D

Firm: **ISL Engineering and Land Services Ltd.**
Client: Mountain View Regional Water Commission
Location: Innisfail, Alberta



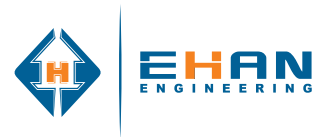
Geohazard Change Detection Research Project

Firm: **Klohn Crippen Berger Ltd.**
Client: Alberta Transportation and Economic Corridors
Location: Alberta



Gravel Road Grading Optimization: Innovating Efficiency in Rocky View County

Firm: **EHAN Engineering Ltd.**
Client: Rocky View County
Location: Rocky View County, Alberta
Other Key Player: Rocky View County



Studies, Software and Special Services



ZEV Financial Breakeven Assessment - HD/MD Fleets

Firm: **GHD Limited**
Client: Transport Canada
Location: Calgary, Alberta



Transportation Infrastructure - Roads, interchanges, airports, mass transit



QEII Highway and 40 Avenue Interchange

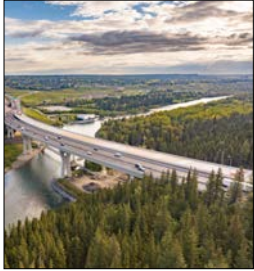
Firm: **Joint: Associated Engineering & ISL Engineering and Land Services Ltd.**
Client: City of Airdrie
Location: Airdrie, Alberta
Sub Consultants: Tetra Tech Canada Inc.; TDM Engineering Ltd.; International Quality Consultants Ltd.; Bison Historical Services Ltd.; Bunt & Associates Engineering Ltd.
Contractor: EllisDon Construction Services Inc.



Tłıchǫ All-Season Road

Firm: **Hatch**
Client: Peter Kiewit and Sons ULC; Government of the Northwest Territories
Location: Near Yellowknife, Northwest Territories
Sub Consultant: Thurber Engineering Ltd.
Contractor: Peter Kiewit Sons ULC





Twining of Stoney Trail over the Bow River in NW Calgary

Firm: **Stantec Consulting Ltd.**
Client: Alberta Transportation and Economic Corridors
Location: Calgary, Alberta
Sub Consultant: Thurber Engineering Ltd.
Contractor: Flatiron-Aecon Joint Venture



West Calgary Ring Road DB1

Firm: **AECOM**
Client: Alberta Transportation and Economic Corridors
Location: Calgary, Alberta
Sub Consultants: ISL Engineering and Land Services Ltd.; Spencer Environmental Management Services Ltd.; Great Northern Engineering Consultants Inc.
Contractor: EllisDon Construction Services Inc.



Small Firm - Big Impact

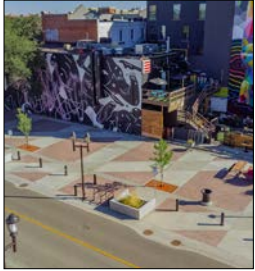


Leslieville Wastewater MAGNA Biofilter Wetland System (MBWS)

Firm: **MAGNA Engineering Services Inc.**
Client: Clearwater County
Location: Leslieville, Alberta
Sub Consultants: MAGNA Engineering Services Inc.; Cleantech Controls Inc.; King Engineering & Consulting Inc.; PrairieGeo Engineering Ltd.
Contractor: Everest Construction Management Ltd.



Small Firm - Big Impact



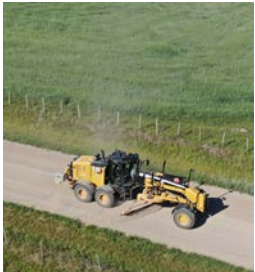
Enhancing Edmonton Communities Through Neighbourhood Renewal

Firm: **Al-Terra Engineering Ltd.**
Client: City of Edmonton
Location: Edmonton, Alberta
Sub Consultants: Thurber Engineering Ltd.; LEX3 Engineering Inc.; D.E.S. Engineering Limited; EDA Planning + Urban Design; Nektar3D Inc.; Twenty/20 Communications
Contractors: O' Hanlon Paving Ltd.; North West Paving Ltd.; Standard General Inc.; Lafarge



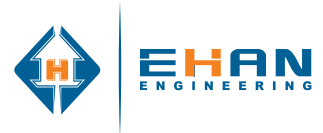
Edmonton Community Health Hub North

Firm: **Englobe Corp. (formerly Arrow)**
Client: Jadecor Developments Ltd.
Location: Edmonton, Alberta
Sub Consultants: Territorial Electric; Modern Niagara
Other Key Player: START Architecture Inc.



Gravel Road Grading Optimization: Innovating Efficiency in Rocky View County

Firm: **EHAN Engineering Ltd.**
Client: Rocky View County
Location: Rocky View County, Alberta
Other Key Player: Rocky View County





Livingston Pond E Storm Park

Firm: **MAGNA Engineering Services Inc.**
Client: Brookfield Residential
Location: Calgary, Alberta
Sub Consultants: MAGNA Engineering Services Inc.; Source2Source Inc.; Cleantech Controls Inc.; LBC Engineering Ltd.; L.A. West Calgary Inc.; McIntosh-Lalani Engineering Ltd. (EnGlobe Corp.); Wolsey Structural Engineering Ltd.
Contractor: Kidco Complete Construction Solutions



Glenora School: Transportation Upgrades and Renewal

Firm: **Al-Terra Engineering Ltd.**
Client: City of Edmonton
Location: Edmonton, Alberta
Sub Consultants: D.E.S. Engineering Limited; EDA Planning + Urban Design Inc.; John Wood Group PLC.
Contractor: Prologic Construction Ltd.
Other Key Players: City of Edmonton; Glenora School



Making a Way: Edmonton's Valley Line West LRT Drainage Relocation Project

Firm: **SMA Consulting Ltd.**
Client: EPCOR
Location: Edmonton, Alberta
Contractor: Shanghai Construction Group
Other Key Players: Associated Engineering; PME Inc.



Small Firm - Big Impact



Dawson's Landing Pond 2A Storm Park

Firm: **MAGNA Engineering Services Inc.**
Client: Qualico Communities
Location: Chestermere, Alberta
Sub Consultants: MAGNA Engineering Services Inc.; Source2Source Inc.;
McIntosh-Lalani Engineering Ltd. (EnGlobe Corp.); Stantec Consulting Ltd.
Contractor: Wilco Contractors Southwest Inc.



Sustainable Design



Cold Lake Fish Hatchery Upgrades

Firm: **Stantec Consulting Ltd.**
Client: Alberta Infrastructure
Location: Cold Lake, Alberta
Sub Consultant: Innovasea Systems Inc.
Contractor: Sure-Form Contracting Ltd.
Other Key Players: LCR Mechanical Contractors Corporation; Electric Services Grand Centre Ltd.



Dawson's Landing Pond 2A Storm Park

Firm: **MAGNA Engineering Services Inc.**
Client: Qualico Communities
Location: Chestermere, Alberta
Sub Consultants: MAGNA Engineering Services Inc.; Source2Source Inc.;
McIntosh-Lalani Engineering Ltd. (EnGlobe Corp.); Stantec Consulting Ltd.
Contractor: Wilco Contractors Southwest Inc.





Fish Creek West Sanitary Trunk

Firm: **MPE, a division of Englobe**

Client: City of Calgary

Location: Calgary, Alberta

Sub Consultants: Applied Aquatic Research Ltd.; AB Erosion & Sediment Control; Almor Testing Services Ltd.; Anena Air Quality Testing; Bifrost Environmental and Remediation Services Inc.; BlueFox Engineering; Englobe Corp.; Hatch; Ian Moxon Architect Inc; Kerr Wood Leidal; Lombard North; Matrix Solutions; NorthStar Contracting Inc; Odds at Home Inspection; Watt Consulting Group

Contractor: Whissell Contracting Ltd.



Highfield Stormwater Management Facility

Firm: **Stantec Consulting Ltd.**

Client: City of Calgary

Location: Calgary, Alberta

Sub Consultant: Source2Source Inc.



Northwest Inner City Upper Plateau Separation

Firm: **Associated Engineering**

Client: City of Calgary

Location: Calgary, Alberta

Sub Consultants: Thurber Engineering Ltd.; Delve Underground

Contractors: Whissell Contracting Ltd.; Ward & Burke Construction Ltd.





Ricochet Oil Corp Aquatic Centre

Firm: WSP

Client: Town of Drayton Valley

Location: Drayton Valley, Alberta

Sub Consultants: Group2 Architecture Interior Design Ltd.; RJC Engineers; Arrow, a division of Englobe; Stantec Consulting Ltd.

Contractors: Chandos Construction; AltaPro Electric Ltd.; Priority Mechanical; Master Pools Alta Ltd.; XMG Commercial Floor Coverings; Spartan Steel Ltd.

Other Key Player: Brazeau County

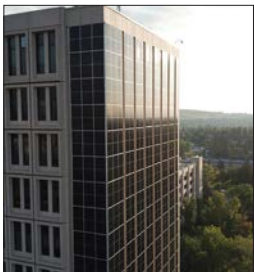


Tent Mountain Renewable Energy Complex

Firm: GHD Limited

Client: Evolve Power

Location: Crowsnest Pass, Alberta



University of Calgary Social Sciences Re-clad and Solar Wall

Firm: Entuitive Corporation

Client: University of Calgary

Location: Calgary, Alberta

Sub Consultants: GGA-Architecture; SMP Engineering; EllisDon; Remedy Engineering; Building Envelope Engineering Inc.



Sustainable Design



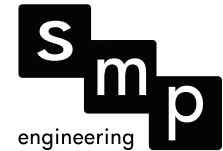
Dawson's Landing Pond 2B Storm Park

- Firm: **MAGNA Engineering Services Inc.**
Client: Qualico Communities
Location: Chestermere, Alberta
Sub Consultants: MAGNA Engineering Services Inc.; Source2Source Inc.; Cleantech Controls Inc.; McIntosh-Lalani Engineering Ltd. (EnGlobe Corp.); Stantec Consulting Ltd.
Contractor: Wilco Contractors Southwest Inc.

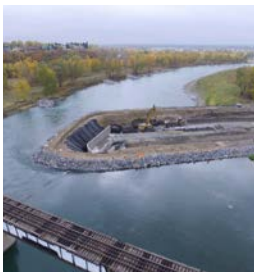


Windermere Fire Station 31

- Firm: **SMP Engineering**
Client: City of Edmonton
Location: Edmonton, Alberta
Sub Consultants: Smith + Andersen; RJC Engineers
Contractor: PCL Construction
Other Key Players: S2 Architecture; gh3*; Urban Systems Ltd.; Complete Power Solutions



Water Resources



Bonnybrook Wastewater Treatment Plant: Plant D Expansion

- Firm: **Stantec Consulting Ltd.**
Client: City of Calgary
Location: Calgary, Alberta
Sub Consultants: Jacobs; AECOM
Contractor: Graham Construction & Engineering





Leslieville Wastewater MAGNA Biofilter Wetland System (MBWS)

Firm: **MAGNA Engineering Services Inc.**

Client: Clearwater County

Location: Leslieville, Alberta

Sub Consultants: MAGNA Engineering Services Inc.; Cleantech Controls Inc.; King Engineering & Consulting Inc.; PrairieGeo Engineering Ltd.

Contractor: Everest Construction Management Ltd.



Bow and Elbow River Hazard Study

Firm: **WSP**

Client: Alberta Environment and Protected Areas

Location: Calgary, Alberta



Cold Lake Fish Hatchery Upgrades

Firm: **Stantec Consulting Ltd.**

Client: Alberta Infrastructure

Location: Cold Lake, Alberta

Sub Consultant: Innovasea Systems Inc.

Contractor: Sure-Form Contracting Ltd.

Other Key Players: LCR Mechanical Contractors Corporation; Electric Services Grand Centre Ltd.





Comprehensive Community Utility Master Planning

Firm: **WSP**
Client: City of Beaumont
Location: Beaumont, Alberta



Confederation Way Sanitary Sewer Bypass

Firm: **Associated Engineering**
Client: Regional Municipality of Wood Buffalo
Location: Fort McMurray, Alberta
Sub Consultant: Thurber Engineering Ltd.
Contractors: OCL Group; BIRD Construction; Sureway Construction Group



Creating Water and Wastewater Infrastructure with Fort McMurray 468 First Nation

Firm: **McElhanney Ltd.**
Client: Fort McMurray 468 First Nation
Location: Fort McMurray, Alberta
Sub Consultants: Sandrex Project Management; Indigenous Services Canada;
Regional Municipality of Wood Buffalo
Contractor: Chandos Construction Ltd.





Dawson's Landing Pond 2B Storm Park

Firm: **MAGNA Engineering Services Inc.**
Client: Qualico Communities
Location: Chestermere, Alberta
Sub Consultants: MAGNA Engineering Services Inc.; Source2Source Inc.; Cleantech Controls Inc.; McIntosh-Lalani Engineering Ltd. (EnGlobe Corp.); Stantec Consulting Ltd.
Contractor: Wilco Contractors Southwest Inc.



Development of Hydrological Models for Alberta River Flood Forecasting

Firm: **Northwest Hydraulic Consultants Ltd.**
Client: Alberta Environment and Protected Areas
Location: Alberta



Dickson Dam Discharge Capacity Enhancement - Service Spillway Upgrades

Firm: **WSP**
Client: Alberta Transportation and Economic Corridors
Location: Red Deer, Alberta
Contractor: PCL Construction
Other Key Players: Kenneth Kress; Lloyd Madge; Kyle Bergen





Digital Leap: Transforming Asset Management from Paper to Digital 3D

Firm: **ISL Engineering and Land Services Ltd.**
Client: Mountain View Regional Water Commission
Location: Innisfail, Alberta



Downtown Flood Barrier and Public Realm Improvements, Eau Claire Plaza to Riverwalk

Firm: **Klohn Crippen Berger Ltd.**
Client: City of Calgary
Location: Calgary, Alberta
Sub Consultants: O2 Planning + Design; Bison Historical Services Ltd.; SMP Engineering; ION Irrigation Management Inc.; ISL Engineering and Land Services Ltd.
Contractors: Graham Infrastructure LP; Wilco Contractors Southwest Inc.; Double Star Drilling; R.W Gallant Equipment Ltd.; Dobbin Electrical Services; Landform Inc.; Greenscape Irrigation



Highfield Stormwater Management Facility

Firm: **Stantec Consulting Ltd.**
Client: City of Calgary
Location: Calgary, Alberta
Sub Consultant: Source2Source Inc.





Inglewood Bird Sanctuary Reconnection Project

Firm: **Kerr Wood Leidal Associates Ltd.**
Client: City of Calgary
Location: Calgary, Alberta
Sub Consultants: Matrix Solutions Inc.; groundcubed; WSP; Thurber Engineering Ltd.; Lifeways of Canada Inc.
Contractors: Wilco Contractors Southwest Inc.; PCL Construction Management Inc.



Livingston Pond E Storm Park

Firm: **MAGNA Engineering Services Inc.**
Client: Brookfield Residential
Location: Calgary, Alberta
Sub Consultants: MAGNA Engineering Services Inc.; Source2Source Inc.; Cleantech Controls Inc.; LBC Engineering Ltd.; L.A. West Calgary Inc.; McIntosh-Lalani Engineering Ltd. (EnGlobe Corp.); Wolsey Structural Engineering Ltd.
Contractor: Kidco Complete Construction Solutions



Malcolm Tweddle & Edith Rogers Dry Ponds and Sewer Improvements

Firm: **AECOM**
Client: EPCOR
Location: Edmonton, Alberta
Contractors: Sureway Construction; GS Construction; M.A.P. Water and Sewer Services; Bothar





Northwest Inner City Upper Plateau Separation

Firm: **Associated Engineering**
Client: City of Calgary
Location: Calgary, Alberta
Sub Consultants: Thurber Engineering Ltd.; Delve Underground
Contractors: Whissell Contracting Ltd.; Ward & Burke Construction Ltd.



Sauder Reservoir - Dam Upgrades

Firm: **MPE, a division of Englobe**
Client: St. Mary River Irrigation District
Location: 21 kms south of Medicine Hat, Alberta
Contractors: BYZ Construction Inc.; Volker Stevin Contracting



Consulting Engineers of Alberta Acknowledges and Thanks the Showcase Awards Gala Sponsors 2024

Supporting Sponsors



Patron Sponsors



Contributing Sponsors



Master of Ceremonies



Ryan Jespersen

Ryan Jespersen hosts Real Talk, one of Canada's most-downloaded modern talk shows. He recently graced the cover of Edify Magazine as the "Prince of Podcasting". Ryan was named one of Alberta's 50 Most Influential People by Venture Magazine, and was on Avenue's inaugural list of Edmonton's Top 40 Under 40. You'll find him online at ryanjespersen.com, and on Twitter and Instagram @ryanjespersen.

Consulting Engineers of Alberta thanks the following
for their expertise in assisting in the success of the
2024 Showcase Awards Gala

ARTSMITH.ca



Consulting Engineers of Alberta would like to thank you
for joining them on this special evening!

– Please join us after the awards program to mix and mingle at the President's After Party –

Karen Claypool and Mitch Smith
join forces to make up Rose Coloured Glasses.
Guitar heavy music with powerful vocals.

– Refreshments including coffee, tea, high-balls, beer, wine and liqueurs will be served –